

USER MANUAL

USE OF A NETTI WHEELCHAIR AS A ***SEAT IN A CAR***



Designed in Norway

*inspire
joy of life*

YOUR NETTI WHEELCHAIR

has been designed, developed and manufactured to be a high quality **wheelchair**.

It is **CE MARKED** thanks to consistent quality assurance in every respect, and is tested to the most stringent requirements for wheelchairs. A German accredited laboratory has carried out independent quality tests and issued a test report according to EN 12183

To increase user friendliness and to offer wheelchair users even better solutions, we have carried out crash tests with the wheelchair. These crash tests (according to ISO 7176-19) show that the wheelchair meets the requirements for use as a seat in a car.

This means that if you as the user **cannot** sit in a regular car seat with seat belts, head rests, etc. you can use your Netti wheelchair as a seat in a car.

We always recommend that you use a regular car seat whenever possible.

GUIDELINES FOR USE AS A SEAT IN A CAR

■ Study the manual

When you get a Netti wheelchair, you should read the user manual carefully to learn how to use and maintain the wheelchair. It is a requirement that you and your helpers have read the user manual carefully to get the most benefit from the wheelchair.

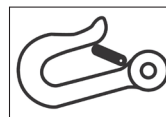


■ Check that the label to the right is fixed to the wheelchair frame showing that the chair is approved for use as a seat in a car.



■ Always fix the chair at the designated positions.

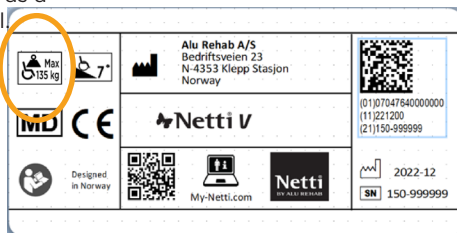
The **snap hook labels** on the wheelchair frame marks the designated positions / car fasteners where the wheelchair is to be secured.



⚠ If non-approved accessories are installed the accessories must be removed each time the wheelchair is used as a seat used in a motor vehicle. Information about the use of the wheelchair as a seat in a car can also be found in the manual.

■ Check the maximum user weight

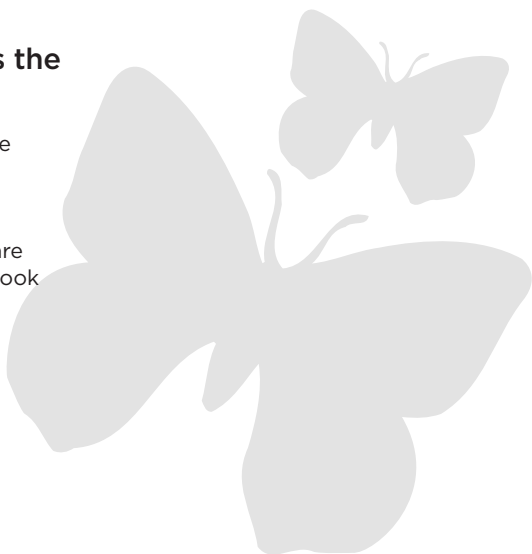
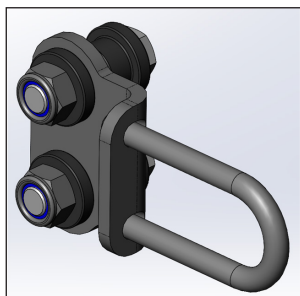
The type plate on the crossbar of the wheelchair frame shows the maximum user weight. Never exceed this maximum weight.



■ Check that the wheelchair has the correct securing attachments

From summer 2025 all Netti wheelchairs are equipped with car fasteners (vertical or horizontal mounted).

NB: On some Netti wheelchairs the straps are fixed around the frame in the front - snap hook labels define the correct position.



■ Prepare the wheelchair for use as a seat in a car:

- 1) Remove all accessories that are not part of the wheelchair. Secure these items elsewhere in the car. Remove backpacks and other objects which hang from the chair, as these will shift the chair's center of gravity.

Remove the table and abduction block. Move medical equipment to a suitable space in the car and secure it.

- 2) Replace "non crash tested" head rests with an approved Netti head rest.

- 3) Replace any air filled seat cushions with an Netti or approved foam seat cushion that cannot collapse.

- 4) Check that back extensions are fitted on the chair if users are more than 1.85 m tall.

- 5) Rise the back of the chair to approx. 90°-100° and tilt the seat unit back to 10°-15°.

- 6) Lower the leg supports into a vertical position and lock them.

Netti wheelchairs are crash tested without auxiliary motors, etc. fitted.

If auxiliary motors, stair climbers, etc. are subsequently fitted, always check that the equipment is crash tested and approved. If not, the equipment must be removed when the wheelchair is used as a seat in a car.

■ Secure the wheelchair facing forwards in the car

⚠ Always use approved securing systems for users and wheelchairs (ISO 10542). Netti wheelchairs are crash tested with approved securing system as Netti car fasteners for wheelchair tiedown and occupant restraint system (WTORS) developed by Urwin Safety System according to ISO 10542.

1) Secure the rear chair attachment belts through the bracket loop, see the image below - one belt on each side. The angle between the belt and floor should be 30°-45°.

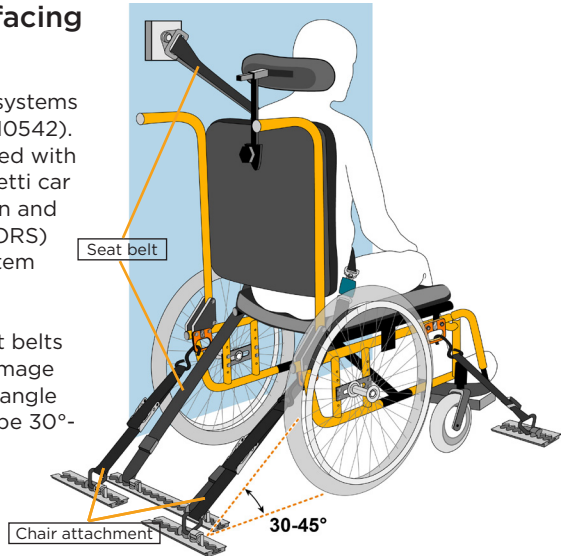
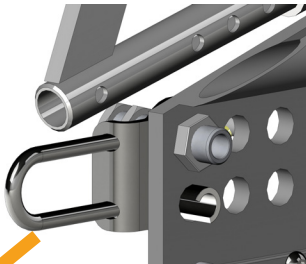
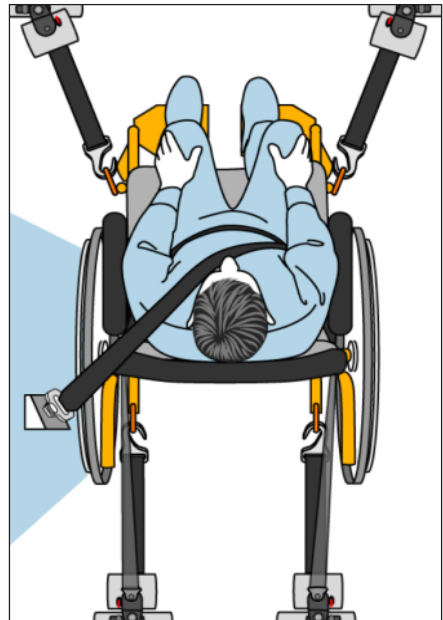


Illustration courtesy of UMTRI Transportation Research Institute - used with permission.

 UNIVERSITY OF MICHIGAN

2) Secure the front chair attachment belts through the wheel frame just behind the caster wheels. The angle between the belt and floor should be approx. 45°- 60° to the floor and a bit more.

⚠ Tighten all belts well!

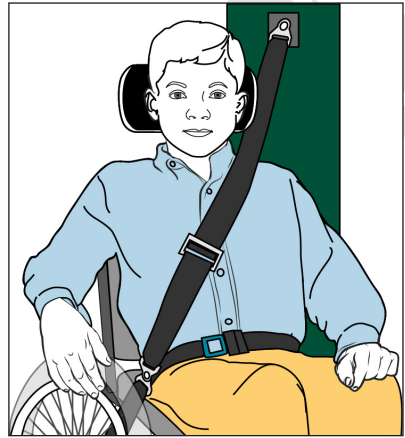


Netti wheelchair used as a seat in a car
Version: 2025-05

■ Safety in the wheelchair

⚠ Always use car safety belts with both a lap belt and a diagonal belt over the chest! Standard belts in wheelchairs are not safety belts, but can help you to maintain a good sitting position.

- 1) Make sure you sit securely in the chair.
- 2) Lower the leg supports and lock them.
- 3) Rise the back to approx. 90°-100°
- 4) Tilt the seat unit approx. 10°-15° backwards.
- 5) Lock the dynamic chair-back and the seat plate if you have a Netti Dynamic System on your chair.
- 6) Fasten the seat belt.

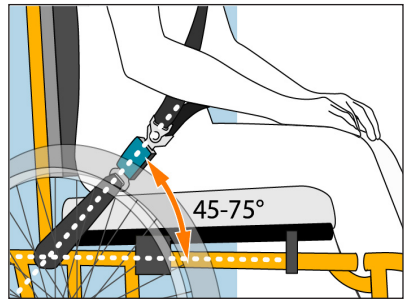


Make sure that the seat belts sit well against your body and not across the armrests, wheels, etc.

The upper belt securing point should be above and behind the shoulder.

The lap belt should be over the hips and thighs - not over the stomach.

The angle between the lap belt and chair frame should be between approx. 45°-75°. Tighten the belt securely.



⚠ Always use a head rest. The head rest should be adjusted so the back of the head is just above the centre of the head rest.

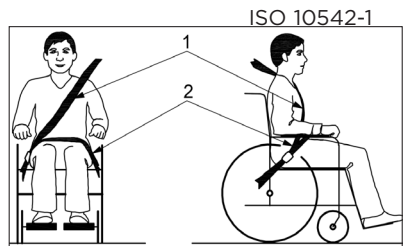
⚠ Never use the headband on a head support when sitting in the wheelchair in a car.

⚠ If the wheelchair needs to be lifted, grab the chair frame where the lifting marks are located. **Never** lift the chair by holding on to the head support, arm supports or leg supports.



HAVE A SAFE JOURNEY

A wheelchair that has been exposed to external stress beyond normal daily use - collisions, drops, impacts, etc. - must not be used as a seat in a car before a representative from the manufacturer has checked and approved it for being used as a seat in a car.



SAFE USE OF THE WHEELCHAIR AS A SEAT IN A CAR

depends on everyone involved taking their share of responsibility - both for the equipment itself, and for training and use.

A wheelchair is not as safe as a car seat for a passenger, but when used correctly, the wheelchair can be used as a seat in a car. Our aim is to provide wheelchair users with the possibilities that car transport opens up to them. Standard BS 8603 Appendix A provides a risk assessment checklist that identifies challenges, restrictions and roles/responsibilities to ensure that the entire transport operation is as safe as possible. The benefit of being able to be transported by car must be weighed against the risk that a wheelchair represents as a seat in a car. When everyone involved and all the equipment meets the applicable safety standards, the residual risk is the responsibility of the user and their relatives.

■ Safety requirements for wheelchairs

EN 12183 / 12184
ISO 7176-19

■ Safety requirements for securing wheelchairs

ISO 7176-19
ISO 10542

■ Safety requirements for car safety belts for wheelchair users

ISO 7176-19
ISO 16840-4
ISO 10542-1

Standards also apply for:

■ Safety requirements for securing systems for wheelchairs in cars

■ Safety requirements for converting cars for transporting wheelchairs including lifting solutions

■ National regulations where local authorities approve the vehicle for use as wheelchair transport

Roles/responsibilities when choosing a wheelchair for use as a seat in a car:

■ Wheelchair users

must, as far as possible, state their needs and requirements and make sure they learn how to safely use the wheelchair when it is delivered.

■ Physiotherapists and/or ergonomists

shall suggest the type of wheelchair based on the user's needs - including transport needs.

■ Wheelchair specialists

shall suggest the type of wheelchair based on the user's needs, recommendations and available solutions.

■ Insurance / technical aids centre

shall approve the type of wheelchair based on the user's needs and recommendations from therapists and wheelchair specialists.

■ Relatives

must make sure they learn how to safely use the wheelchair, especially its use as a seat in a car, when they are involved in this.

■ Assistants and care staff

must be trained in the use of the wheelchair, especially its use as a seat in a car.

■ Car drivers

must be trained in the use of the car's securing system for wheelchairs and wheelchair users.

■ Transport companies

must provide training in the use of the car's securing system for wheelchairs and wheelchair users.

SPECIALLY ADAPTED / CUSTOMISED SOLUTIONS:

For some users, a regular CE approved and crash tested wheelchair with standardised configurations may not meet their needs. In such cases, Alu Rehab can produce specially adapted / customised wheelchairs.

A specially adapted wheelchair will not initially be approved for use as a seat in a car.

For a specially adapted wheelchair, it may be necessary to risk assess whether it can be used as a seat in a car if this is a requirement. This must be requested from your local Alu Rehab dealer. Alu Rehab will carry out a risk assessment based on the specific, customised chair and information about the user, height, weight, activity, etc. In some cases, the specially adapted chair will be considered strong enough to be used as a seat in a car for this user. Such chairs cannot be recycled and given to a new user without carrying out a new risk assessment to see whether it can be used as a seat in a car for the new user.

Exceptions for specially adapted components


If you wish to use a crash tested Netti wheelchair - fitted with specially adapted / customised components - as a seat in a car, you can replace the specially produced components with standard Netti components, e.g. head rest, armrests or leg supports. Make sure that the standard parts are fitted according to the description in the user manual.

COMBINATION AGREEMENTS


Alu Rehab has signed combination agreements with 3rd party suppliers, where Netti wheelchairs are combined, risk assessed and tested with selected products, and approved the combination. Some of these combinations are also approved for use as a seat in a car. Please contact us for more information.


PUBLIC TRANSPORT

The wheelchair should be placed in the designated area for wheelchairs. The wheelchair should be facing backwards. The back of the wheelchair should lean against a fixed wall, chair back or similar. Make sure that the user can hold on to a handle or bar.

 If the overall width of the wheelchair is greater than 700 mm as specified in the PRM-TSI, this can limit the opportunities for transport by rail and other modes of public transport.

MAKE SURE THAT THE WHEELCHAIR IS REGULARLY SERVICED AND MAINTAINED FOR IT TO BE SUITABLE FOR USE AS A SEAT IN A CAR

 The user is responsible for ensuring that the wheelchair is used and maintained according to this user manual and the wheelchair user manual.

 A wheelchair that has been exposed to external stress beyond normal daily use - collisions, accidents, drops, impacts, etc. - must not be used as a seat in a car.



Manufacturer:

Alu Rehab AS
Bedriftsvegen 23
N-4353 Klepp Stasjon
Norway

✉ post.klepp@Meyragroup.com
T: +47 51 78 62 20
my-netti.no

Distribution EU

📍 Alu Rehab ApS
Kløftehøj 8
DK-8680 Ry
Denmark

✉ info.ry@Meyragroup.com
T: +45 87 88 73 00
F: +45 87 88 73 19
my-netti.dk

My-Netti.com

