


 **Netti**[®] *Installation instruction*
Universal device basket


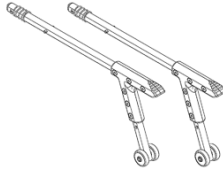



for Netti 4U wheelchairs



CE This product complies with EU Regulation
2017/745 for medical devices.

Universal device basket for Netti 4U wheelchairs

The kit consists of :

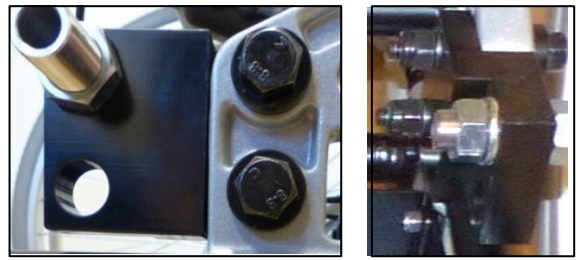
Pos. 1 :	Universal device basket	
Pos. 3 :	2 extra-long antitippers with pedal	
Pos. 4 :	2 rectangular washers with 3 holes. Mounting direction is depending on 22"/24" wheels	
Pos. 5 :	4 bolts and 4 self-locking nuts	
Pos. 6 :	4 steering tubes	

Here you have an image to see how the device is assembled to a chair:



Please follow the instruction on the next page step by step.

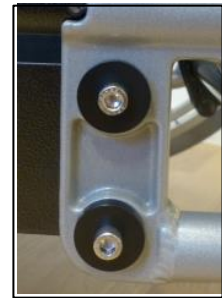
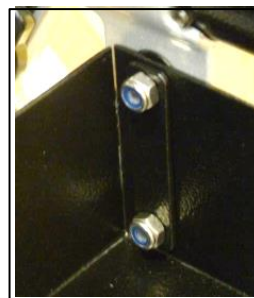
1. With the chair you will get a pair of frame extenders according to wheel size ordered. First add the frame extenders to the chair. Place the extenders from inside the chair frame in the 2 upper holes for 22" and 24" wheels. Frame and extenders should be mounted in a line.



2. Plug the steering tubes and the bolts coming with the extnder kit from outside to inside and fix the extenders from inside with the bolts coming with the kit. Add the wheel bushings to the extender on both sides in the needed height position.



3. Add the 4 steering tubes (Pos. 6) to the holes you have not used for the extenders and place the Universal device basket (Pos. 1) in-between the frame. Plug the bolts (Pos. 5) from outside into the steering tubes and add the rectangular washers (Pos. 4) from inside the device. Fix them with the self-locking nuts (Pos. 5).



4. Finally add the extra-long antitippers (Pos. 3) to the frame and test if you can swing the antitippers upwards.



The anti-tips must always be turned and locked downwards whenever the basket is mounted to a wheelchair.

The wheelchair with Universal device rack is approved for being used as a seat in a car as long as the content of the device rack is safely stored elsewhere in the car.



The Universal device basket has a maximum load of 6 kg / 13 lb!



Maximum load:

Please note that the entire load on the wheelchair including the user, any accessories, the universal device basket, and other equipment, must not exceed the maximum load of the wheelchair written on the label of the wheelchair.

Important note:

A copy of these installation and operating instructions must be given to the user of the wheelchair and their carers.

Instructions for use of a wheelchair together with the universal device basket:

1. The wheelchair must be equipped with frame extensions and extra-long antitippers
2. The maximum load including user, accessories, universal device basket, and other equipment, must not exceed the maximum load of the wheelchair written on the label of the wheelchair.
3. The antitippers must always be swung downwards and locked to prevent the wheelchair tipping backwards and causing injury to bystanders or damage to property. There is an increased risk of tipping if nobody is sitting in the chair.
4. Avoid driving over kerbs or steps.
5. Make sure there are no kinks in any hoses , cables or other connections to the devices used on the basket.
6. Make sure all devices in the basket on or the protective cover are properly secured to prevent them from moving and becoming damaged while the wheelchair is being used.
7. Make sure all devices and the connections to them are placed where they cannot collide with external obstacles while the chair is being moved.
8. Do not exceed the maximum load of 6 kg on the universal device basket.
9. Cleaning: the universal device basket may be cleaned by using a mild detergent and a soft cloth. Do not use abrasive or aggressive cleaning materials.
10. Maintenance: regularly check that all the screws are tightened securely. If necessary contact your special dealer for advice.
11. The wheelchair with Universal device carrier is **not approved** for being used as a seat in a vehicle. Remove and secure the medical devices and the universal device carrier safely in the vehicle before using the wheelchair as a seat in a vehicle.
12. Disclaimer: Alu Rehab is not liable for any damage or injury resulting from improper use of this product.
13. Report any damage to your dealer or to Alu Rehab.

Universal device basket available sizes: 350, 400, 430, 450, 500, 550, and 600 mm

Dimensions for a chair with SW 450 mm:


Inner width: 405 mm


Inner depth: 305 mm

Edge height: max. 70 mm

For other SW add or deduct from SW 450 mm.

Producent:

 Alu Rehab AS
Bedriftsvegen 23
N-4353 Klepp Stasjon
Norway

 post.klepp@meyragroup.com
T: +47 51 78 62 20
my-netti.com