



Car fastener kit

Netti 4U family

Netti III family

Netti V family

Netti Adapt Pro

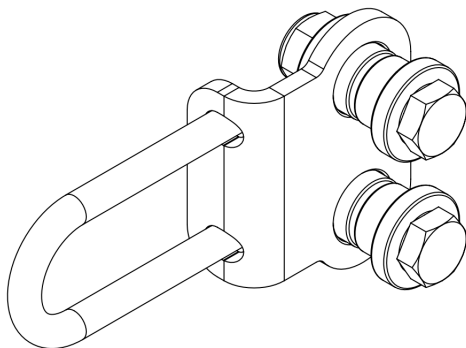
Netti S family

Mounting Descriptions

*inspire
joy of life*

KIT 94610

Netti 4U family



NETTI 4U - WHEELCHAIRS

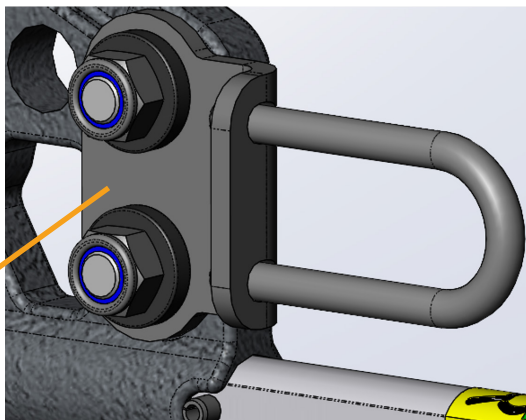
At the rear end of each Netti 4U wheel-chair side frame you will find 4 holes.

One hole is used to mount standard rear wheel or rear wheel with drum brake.

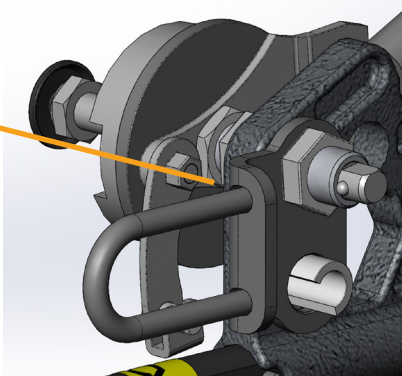
Always mount car kit in the two holes above the anti-tip.

If 12" or 16" rear wheels are used, mount the car kit like on illustration.

If 20"-26" rear wheel is used, remove one of the M10 nuts and bolt and mount the wheel in it's position.



When using drum brake mount the car kit as shown on illustration, do not use any of the screws included in the kit.



40Nm torque on M18x1 Nut

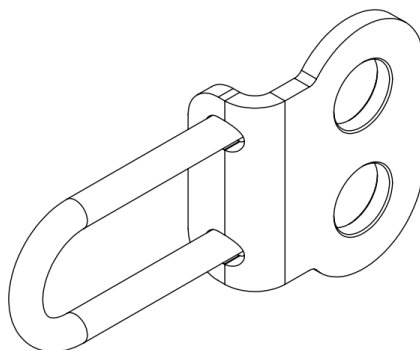
KIT 94125

Netti V

NETTI V - WHEELCHAIRS

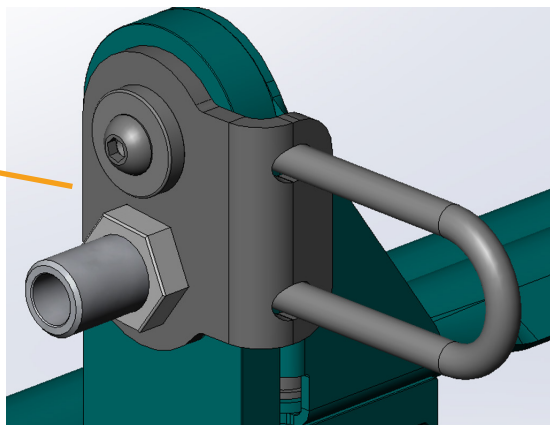
At the rear end of the Netti V wheelchair, where the main wheels are mounted, you will find two holes.

One hole is used to mount standard rear wheel or rear wheel with drum brake.



For standard wheels:

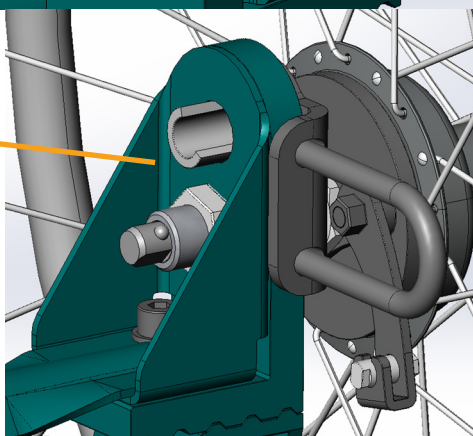
Mount the car kit as shown on the illustration, the position of the M8 screw and the sleeve for the main wheel may vary, depending on wheel size and seat height adjustment.



40Nm torque on M18x1 Nut

For drum brake wheels:

Mount the car kit as shown on the illustration, the position of the rotation stopper and the sleeve for the main wheel may vary, depending on wheel size and seat height adjustment.



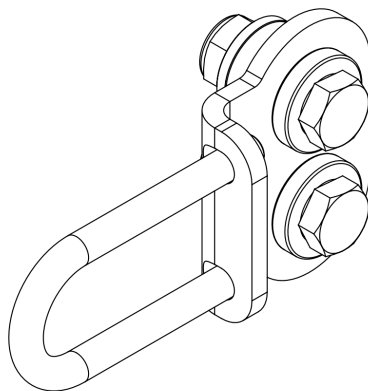
KIT 96306

Netti III family

NETTI III - WHEELCHAIRS

At the rear end of the Netti III wheelchair lower frame you will find 6 holes.

One hole is used to mount standard rear wheel or rear wheel with drum brake.

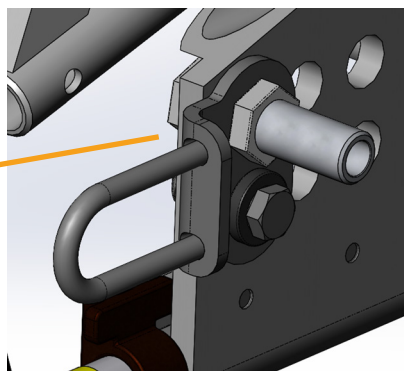


For standard wheels:

Mount the car kit as shown on the illustration, the position of the M8 screw and the sleeve for the main wheel may vary, depending on wheel size and seat height adjustment.

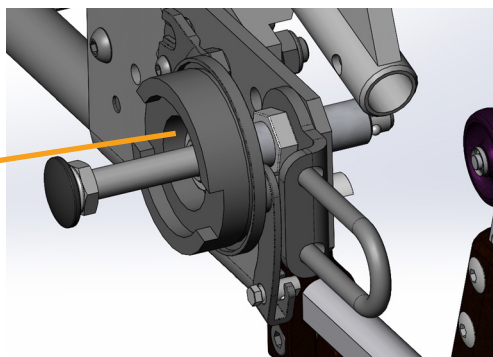


40Nm torque on M18x1 Nut



For drum brake wheels:

Mount the car kit as shown on the illustration, the position of the rotation stopper and the sleeve for the main wheel may vary, depending on wheel size and seat height adjustment.



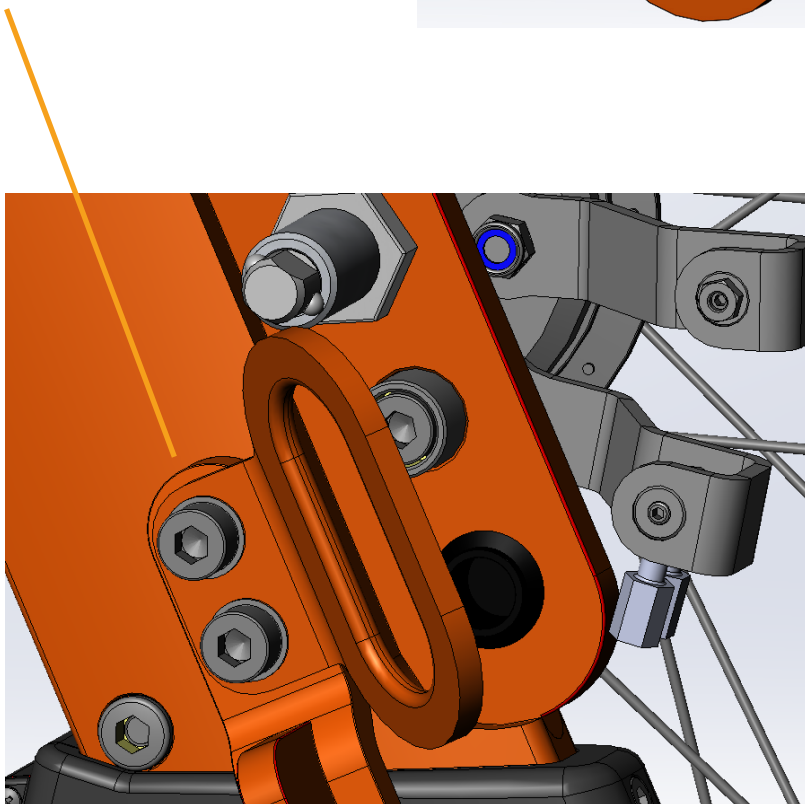
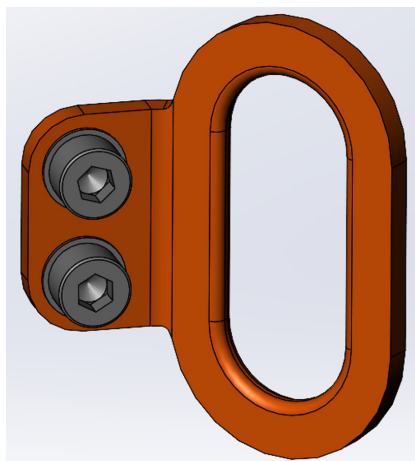
KIT 88203

Netti Adapt Pro

NETTI ADAPT PRO - WHEELCHAIRS

At the rear end of the Netti Adapt Pro wheelchair lower frame you will find a cross bar with two M8 screws on each side.

Mount the car kit as shown on illustration below.



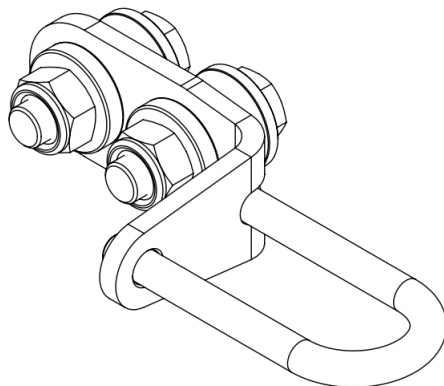
KIT 95725

Netti S

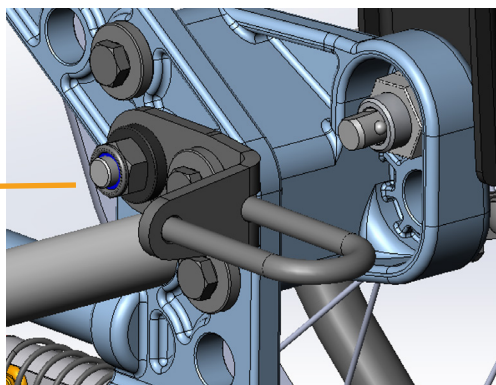
NETTI S - WHEELCHAIRS

At the rear end of the Netti S wheelchair lower frame you will find 6 holes.

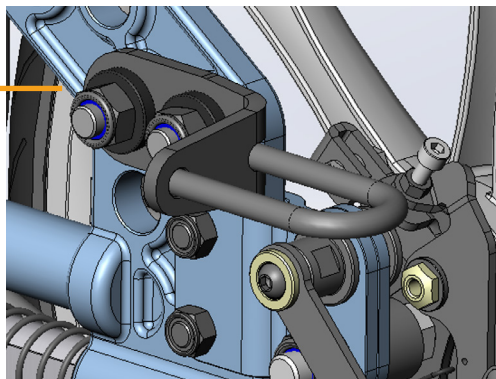
Place the car kit in the two upper holes in a horizontal orientation like shown on the illustration.



For 22" wheel, mount the car kit with one of the bolts included in the kit, and re-use one bolt for the frame extender.



For 16" wheel, mount the car kit in the same position, but use both bolts included in the kit.



Manufacturer of Netti:



Alu Rehab AS
Bedriftsvegen 23
N-4353 Klepp Stasjon
Norway



post.klepp@meyragroup.com
T: +47 51 78 62 20
my-netti.com

EU Distributor

Alu Rehab ApS
Kløftehøj 8
DK-8680 Ry
Denmark

info.ry@meyragroup.com
T: +45 87 88 73 00
my-netti.com