

Date _____	Customer code C- _____
Invoice address _____	Contact person _____
_____	Reference _____
_____	Other delivery address _____
_____	_____
<input type="checkbox"/> Invoice address = delivery address	<input type="checkbox"/> Quote

With this customized wheelchair, we combine TA's unique power wheelchair design with Netti's dynamic seat unit. This allows for extra mobility for users with involuntary movements.

The TA wheelbase is a wheelchair in compact and unique design, which offers unique suspension on all wheels and a superior handling and comfort.

The Netti Dynamic system allows for movement and assists the user back in correct position after an unwilling movement. Netti Dynamic System is equipped with a dynamic seat and back unit and optional dynamic leg and head support. Furthermore, a Bodypoint EVOFLEX pelvic stabilizer is standard.

The chair will be used as seat for car transport.

## Special adaptation - Price request

- Seat width**
- 350 mm
  - 380 mm
  - 400 mm
  - 430 mm
  - 450 mm
  - 500 mm
  - 550 mm
  - 600 mm



- Seat depth**
- 350 mm
  - 375 mm
  - 400 mm
  - 425 mm
  - 450 mm
  - 475 mm
  - 500 mm

■ = default configuration  
 Capacity: max. 135 kg  
 Seat height: 425 / 445 mm  
 Ground clearance: 700 mm  
 Overall width: 630 mm  
 Total mass: app. 155 kg

NORWAY: Alu Rehab AS | Bedriftsvegen 23 | N-4353 Klepp stasjon | post@My-Netti.com | Phone +47 51 78 62 20  
 DENMARK: Alu Rehab ApS | Kløftehøj 8 | DK-8680 Ry | info@My-Netti.com | Phone +45 87 88 73 00

## CHASSIS / MOTOR



- TA iQ Frontwheel electric wheelchair (FWD)
  - Electric lift 300 mm
  - Seat tilt 45°
  - Speed 6 km/h
  - Motor power 2 x 350W
  - Range 40 km
  - Minimum turning radius 650 mm
  - Obstacle clining 100 mm



- TA iQ Midwheel electric wheelchair (MWD)
  - Electric lift 300 mm
  - Seat tilt 45°
  - Speed 6 km/h
  - Motor power 2 x 350W
  - Range 40 km
  - Minimum turning radius 450 mm
  - Obstacle clining 80 mm

## OPTIONS FOR CHASSIS/ MOTOR

- Gyro module – standard with TA iQ FWD
- Gyro module for TA iQ MWD
- Antitip for TA iQ FWD
- Dahl car docking with lock plate



- Dahl car attachment without lock plate

## BATTERIES AND CHARGERS

- Batteries 80Ah (2 pieces)
- Charger 8A Celpower
- Charger 10A Medico

## DRIVE WHEELS

- Drive wheels 12 ½ x 2 ¼" pneumatic tyres – tire grey



NORWAY: Alu Rehab AS | Bedriftsvegen 23 | N-4353 Klepp stasjon | post@My-Netti.com | Phone +47 51 78 62 20  
 DENMARK: Alu Rehab ApS | Kløftehøj 8 | DK-8680 Ry | info@My-Netti.com | Phone +45 87 88 73 00

- Seat height 425 mm
- Puncture proof tyres
- Tyre in black colour
- Drive wheels 14" – for seat height 445 mm

### CASTOR WHEELS

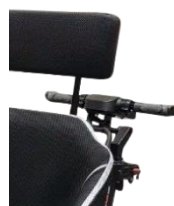
- Castor wheels 4" pneumatic tyres – tire grey



- Seat height 425 mm
- Puncture proof tyres
- Tyre in black colour
- Drive wheels 14" – for seat height 445 mm

### CONTROL UNIT FOR ATTENDANT

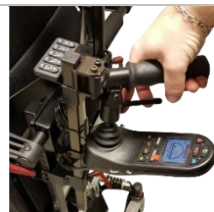
- Scoot control from Movis  
Movis push bar with good ergonomics and intuitive steering: Simply click the right button and the wheelchair drive forwards – you steer simply by pushing to the left or right. Click the left button and you drive backwards.



- Forus intuitive steering from Attende  
The Forus push bow gives you an easy intuitive steering. Pushing down to drive forwards. Lifting the handles to drive backwards.



- One-hand steering  
One-hand steering from TA, allowing the attendant to walk beside the chair keeping a good communication with the person in the wheelchair. Easy and intuitive to operate.  Right side mounting  Left side mouting



### DYNAMIC SEAT- AND BACKSOLUTION

- Dynamic gas spring for the back angle
- Dynamic seat plate
- Body Point Evoflex pelvic stabilizer (choose size below, see guide on page 9)

**Option 1: 15° Dynamic gas spring for the back angle - cannot be blocked - cannot be allowed for car transportation, as the back angle cannot be blocked.**

Back unit with Dynamic gas spring allows 15° trunk extension movements backwards. The standard recline is maintained and can be adjusted in any position. The Dynamic gas spring cannot be blocked. Recommended for stiffness patterns which tend to persist, spasticity, and also for comfort and prevention.

- Dynamic gas spring 80 N
- Dynamic gas spring 120 N
- Dynamic gas spring 160 N

---

**Option 2: 40° Dynamic FREE gas spring for the back angle - lockable**

Back unit with Dynamic Free gas spring allows up to 40° trunk extension movements backwards. The standard back recline can be locked in any position as the dynamic movement is blocked simultaneously, which can be appropriate during transport or positioning. The back recline and blocking/unblocking of the dynamic back movement is done with a special dynamic release handle. The Dynamic Free gas spring is recommended for severe extension patterns, also for violent and sudden movements.

- Dynamic FREE gas spring 200 N (SW 350 - 400 mm)
- Dynamic FREE gas spring 300 N (SW 350 - 400 mm)
- Dynamic FREE gas spring 400 N (SW 350 - 400 mm)
- Dynamic FREE gas spring 500 N (SW 350 - 400 mm)
- Dynamic FREE gas spring 600 N (SW 350 - 430 mm)
- Dynamic FREE gas spring 700 N (SW 350 - 430 mm)
- Dynamic FREE gas spring 800 N (SW 350 - 430 mm)
- Dynamic FREE gas spring 900 N (SW 450 - 500 mm)
- Dynamic FREE gas spring 1000 N (SW 450 - 500 mm)
- Dynamic FREE gas spring 1100 N (SW 450 - 400 mm)
- Dynamic FREE gas spring 1200 N (SW 450 - 500 mm)
- Dynamic FREE gas spring 1300 N (SW 450 - 500 mm)



Bodypoint EVOFLEX pelvic stabilizer

Size  XS  M  L



Bodypoint 4-point padded hip belt

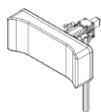
Size  XS  M  L



Security cover for 2/4-point pelvic stabilizer (XS, M, L)

**DYNAMIC HEAD SUPPORT (for other head support solutions, see page 7)**

- Netti Dynamic head support C incl. head support adapter in aluminium

**DYNAMIC LEG SUPPORTS AND ACCESSORIES**

- Dynamic leg support angle adjustable with calf supports and footboard, 100 N  
Std. 300 mm adjustment piece  
For lower leg length 450-550 mm



- 214 mm adjustment piece  
For lower leg length 350-450 mm
- Extension bracket to be used by uneven leg length or leg position adjusting the foot board depth (available for both leg length options)
- Leg support upper parts with lever instead of star wheel for angle adjustment
- Reinforced automatic footboard lock - Not possible to combine with extension brackets for uneven leg length. With this lock the footboard is not angle adjustable, but this can be offered as special adaptation.



- Bodypoint ankle huggers incl. mounting material (see size guide page 9)
- D44863 S (L: 170-200 mm)
- D44864 M (L: 190-230 mm)
- D44865 L (L: 220-290 mm)
- D44904 XL (L: 280-330 mm)

- Extra abduction for legsupport solution  
Right side: \_\_\_\_\_ mm  
Leg side: \_\_\_\_\_ mm
- Calf support bracket upholstery - pair - skai cover
- Calf support upholstery extra soft - pair - EC or 3D cover depending on the fabric for the whole chair
- Bodypoint calf strap M
- Bodypoint calf strap L

**BACK UNIT**

- Back cushion Netti Smart - side support 120 mm - 3D cover
- Back height 500 mm (incl. adjustable velcro back)
- Easy care cover for all upholsteries
- Back height 600 mm (incl. back extender + longer cushion)
- Adjustable velcro with cut for side supports
- Side support correction with upholstery left – for Netti Smart

NORWAY: Alu Rehab AS | Bedriftsvegen 23 | N-4353 Klepp stasjon | post@My-Netti.com | Phone +47 51 78 62 20  
DENMARK: Alu Rehab ApS | Kløftehøj 8 | DK-8680 Ry | info@My-Netti.com | Phone +45 87 88 73 00

<input type="checkbox"/>	Side support correction with upholstery right – for Netti Smart
<input type="checkbox"/>	Back cushion Netti Stabil - with 170 mm side support with 3D cover
<input type="checkbox"/>	Back cushion Netti Super Stabil – with 170 mm reinforced side support, 3D cover
<input type="checkbox"/>	Side support stable left – for Netti Stabil and Super Stabil
<input type="checkbox"/>	Side support stable right – for Netti Stabil and Super Stabil
<input type="checkbox"/>	Upholstery for side support stable, pair
<input type="checkbox"/>	Firm back in aluminium
<input type="checkbox"/>	Lumbar support
<input type="checkbox"/>	Back wedge
<input type="checkbox"/>	Ride Designs Java cushion
<input type="checkbox"/>	Ride Designs accessories for back – please state article number: _____

**BELTS AND ACCESSORIES FOR BACK UNIT FROM BODYPOINT AND NETTI (see size guide on page 9)**

				
[A]	[B]	[C]	[D]	[E]
<input type="checkbox"/>	H-harness adaptor kit (recommended for all upper body harnesses) [A]			
<input type="checkbox"/>	H-belt, with upholstery and car belt lock [B]			
<input type="checkbox"/>	Belt cross harness [C]			
	Bodypoint Stayflex chest support without zipper [D]			
<input type="checkbox"/>	XS (Shoulder width 240-280 mm)			
<input type="checkbox"/>	S (Shoulder width 280-330 mm)			
<input type="checkbox"/>	M (Shoulder width 330-410 mm)			
<input type="checkbox"/>	L (Shoulder width 410-480 mm)			
	Bodypoint Pivofit shoulder harness [E]			
<input type="checkbox"/>	XS (Shoulder width 240-280 mm)			
<input type="checkbox"/>	S (Shoulder width 280-330 mm)			
<input type="checkbox"/>	M (Shoulder width 330-410 mm)			
<input type="checkbox"/>	L (Shoulder width 410-480 mm)			

**SEAT UNIT**

- Seat cushion Netti Uno – 3D cover
- Dynamic seat unit
- Netti Sit - Pressure relief seat cushion with incontinence layer under the 3D cover
- Incontinence cover for seat cushion
- Pressure relief seat cushion Netti Sit °C with temperature regulating features and incontinence layer under the 3D cover
- Abduction block small (W: 80 mm x L: 140 mm x H: 80 mm)
- Abduction block medium (W: 110 mm x L: 150 mm x H: 80 mm)
- Abduction block large (W: 140 mm x L: 170 mm x H: 80 mm)
- Ride Designs Forward cushion
- Ride Designs Java cushion
- Ride Designs accessories for seat – please state article number: \_\_\_\_\_

**ARM SUPPORTS**

- Arm supports height and depth adjustable
- Completely upholstered armrest height 395 mm with app. 20 mm thick Skai upholstery. Arm pad 450 x 100 mm and skirt guard app. 570 x 215 mm
- Arm supports height adjustable 280 – 310 mm

**HEAD SUPPORTS & ACCESSORIES FOR HEAD SUPPORTS**

- |  |   |   |   |   |   |   |
|--|---|---|---|---|---|---|
|  | A | B | C | D | E | F |
|--|---|---|---|---|---|---|
- Head support adapter aluminium (not to be combined with stabilizer for head rest)
  - Head support A, with side support
  - Head support A with side support and head band
  - Extra comfort pads for the head band, pair
  - Head support B, small, oval
  - Head support C, large, square
  - Head support D, comfort (pressure distributive)
  - Head support E with adjustable side supports
  - Head support F with cheek support
  - Head support adjustment tube (horizontal) + 100 mm, length 250 mm
  - Head support adjustment tube (horizontal) + 230 mm, length 380 mm
  - Head support adjustment tube (vertical) + 100 mm, length 500 mm
  - Comfort cushion for head rest type C – removable with Mars cover
  - Easy Care cover for head rest type A, B, C – removable
  - 3D cover for head rest type A, B, C – removable
  - Grey head rest cushion with Mars cover
  - Stabilizer for head rest (recommended for car transportation)

NORWAY: Alu Rehab AS | Bedriftsvegen 23 | N-4353 Klepp stasjon | post@My-Netti.com | Phone +47 51 78 62 20  
 DENMARK: Alu Rehab ApS | Kløftehøj 8 | DK-8680 Ry | info@My-Netti.com | Phone +45 87 88 73 00



- [A] Savant head support incl. headband, small – height 130 mm  
User forehead 460-560 mm  
User ½ circumference behind ears 150-180 mm  
Inside distance along top support 300 mm, along middle support 180 mm  
(not for transport in car)

---

- [A] Savant head support incl. headband, adult – height 150 mm  
User forehead 560-610 mm  
User ½ circumference behind ears 200-300 mm  
Inside distance along top support 360 mm, along middle support 200 mm  
(not for transport in car)

---

- [B] Side pads for Savant head support. For extra lateral support.  
For the upper arms of the head support. Cannot be combined with the headband

---

- Head support adjustment tube (horizontal) + 100 mm, length 250 mm

---

- [C] Axion head support rotary interface, permits a lateral rotation of 60° (not approved for car transport)

---

- Axion head support rotary interface, permits a lateral rotation of 90° (not approved for car transport)

**TRAYS**

Please note that the use of a tray cannot be recommended in combination with a dynamic seat unit. A tray is static and together with a dynamic seat unit this may cause injury.

- Tray reinforced - simply pushed over the arm supports

---

- Tray swingable - mounted with tray space adapters

---

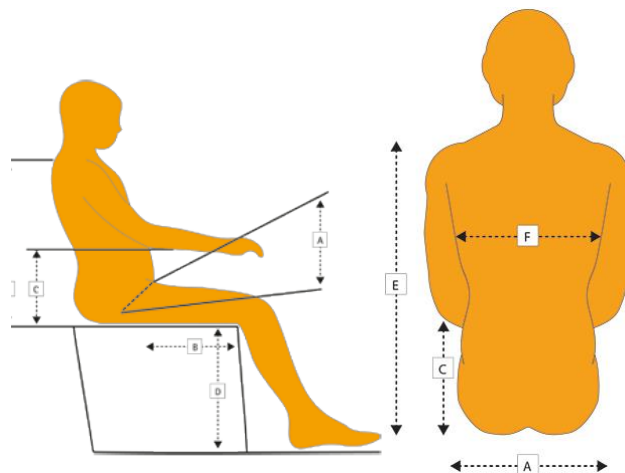
- Tray lockable - mounted with tray space adapters

---

- Upholstery for tray

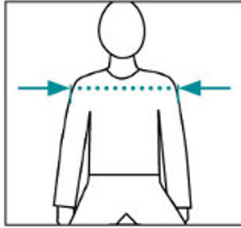
**Measurements**

- A Hip width/Seat width \_\_\_\_\_ mm
- B Thigh length / seat depth \_\_\_\_\_ mm
- C Arm rest height \_\_\_\_\_ mm
- D Leg length / seat height \_\_\_\_\_ mm
- E Backrest height \_\_\_\_\_ mm
- F Trunk width \_\_\_\_\_ mm



NORWAY: Alu Rehab AS | Bedriftsvegen 23 | N-4353 Klepp stasjon | post@My-Netti.com | Phone +47 51 78 62 20  
 DENMARK: Alu Rehab ApS | Kløftehøj 8 | DK-8680 Ry | info@My-Netti.com | Phone +45 87 88 73 00





#### Shoulder width

<b>XXS</b>	210-240 mm
<b>XS</b>	240-280 mm
<b>S</b>	280-330 mm
<b>M</b>	330-410 mm
<b>L</b>	410-480 mm

#### Measuring for Stayflex and PivoFit

Measure the shoulder width. If the shoulder width falls between two sizes, consider other factors such as growth, weight changes and clothing.

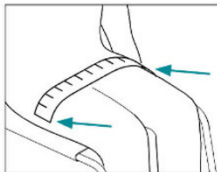


#### Ankle circumference

<b>S</b>	170-200 mm
<b>M</b>	190-230 mm
<b>L</b>	220-290 mm
<b>XL</b>	280-330 mm

#### Measuring for Ankle huggers

Measure circumference above ankle.



#### Measuring for a hip belt

Measure hip width across the greater trochanters with the person seated. If the hip width falls between sizes on our chart, consider other factors such as growth, weight change and clothing.

#### Overall pad length

<b>XS</b>	380 mm
<b>M</b>	460 mm
<b>L</b>	620 mm