

# Mounting Description

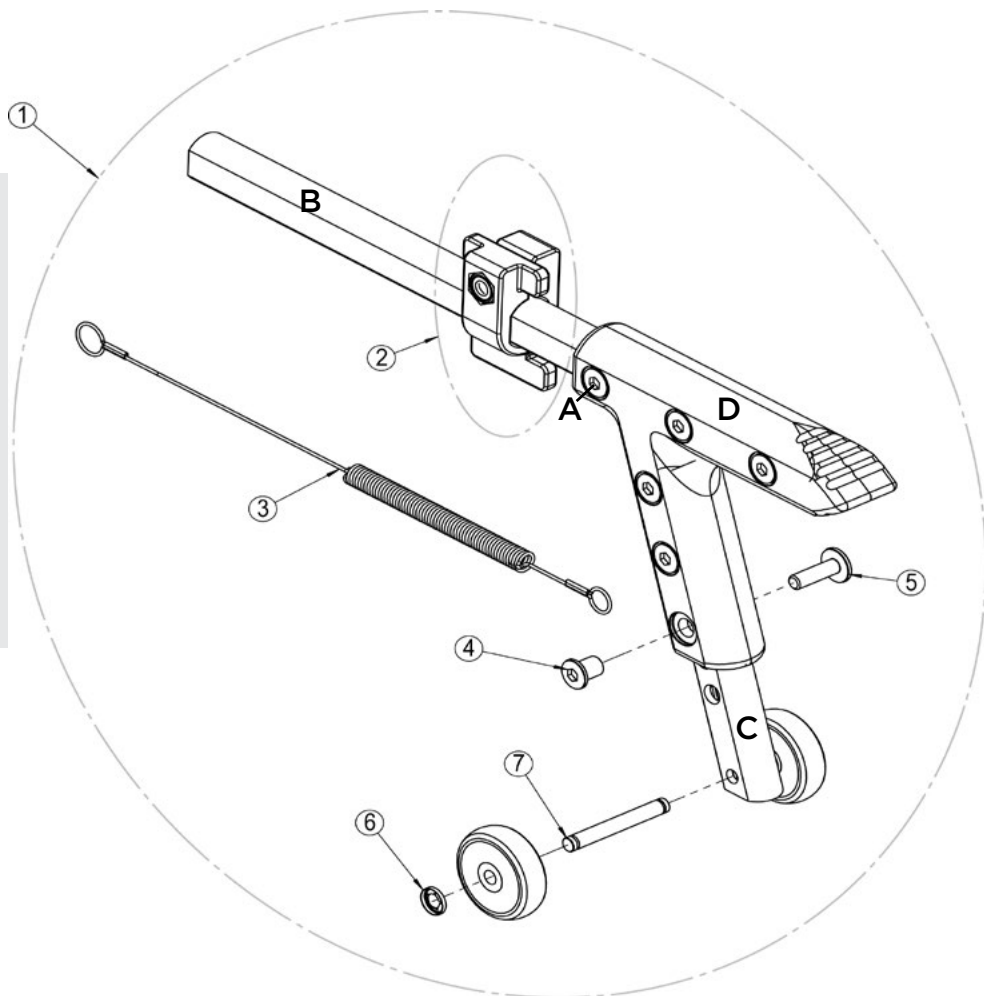
Anti-tippers for Netti III family

*Enable joy of life*

# MOUNTING DESCRIPTION: Anti tip for Netti III family



Tools:  
2 pc 5 mm Allen keys  
1 pc 6 mm Allen key.



The long anti-tip spring (3) is installed in the lower wheelchair frame tube of Netti III.

- Loosen the anti-tip depth bracket (2) with the 6 mm Allen key and push it towards the step pedal (D).

- Unscrew the front screw (A) on the foot pedal.

- Insert the horizontal anti-tip profile (B) into the wheelchair frame tube and make sure the spring (3) enters into the horizontal anti-tip tube. When this is inserted all the way to the bottom, the spring rear loop will be in front of the screw hole for screw (A).

- Insert the screw (A) and check it has hit the loop by pulling in the anti-tipper. There shall be a certain resistance.

- Tighten the screw (A) with the 5 mm Allen key.

- Pull the anti-tipper backwards until the rear end of the foot pedal aligns with the rear end of the main wheels. At the same time, push the depth bracket forwards till it touches the wheelchair frame tube.

- While holding the both, tighten the screw in the depth bracket (2) with the 6 mm Allen key. Make sure it sits firmly fixed and hold the anti - tip in required depth.

- Adjust the height of the anti-tip. Its small wheel shall have a distance to the floor of ca 20-30 mm. If you are driving the wheelchair out-door the distance shall be up to 50 mm from the ground.

- To adjust the anti-tippers height you need to unscrew all the 6 screws holding the vertical part of the foot pedal (D) with 5 mm Allen keys.

- Pull or push the height profile (C) to required height.

- Insert the 6 screws in the vertical part of the foot pedal and tighten well.

- To check that the anti-tipper is correctly mounted you pull the anti-tipper backwards and turns it 180 degree. It shall stay turned upwards.

Repeat and turn it downward. It shall click in and stay turned downward.

- Repeat the mounting procedure to the second anti-tipper and check that they both get the same height and depth position.



IN DIALOGUE WE CREATE  
SIMPLE SOLUTIONS AND  
ENABLE JOY OF LIFE



This product conforms to  
93/42/EEC for medical products.

MD0134UK  
2017-02

**FEEL FREE TO CONTACT US:**



Alu Rehab AS  
Bedriftsvegen 23  
4353 Klepp Stasjon  
NORWAY

T: +47 51 78 62 20  
post@My-Netti.com

Alu Rehab ApS  
Kløftehøj 8  
DK-8680 Ry / DENMARK

T: +45 87 88 73 00  
F: +45 87 88 73 19  
info@My-Netti.com