

MOUNTING DESCRIPTION

**Libertas kit
Netti III**



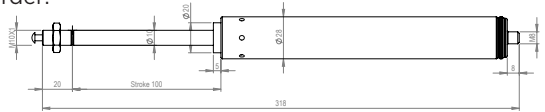
Enable joy of life

LIBERTAS KIT

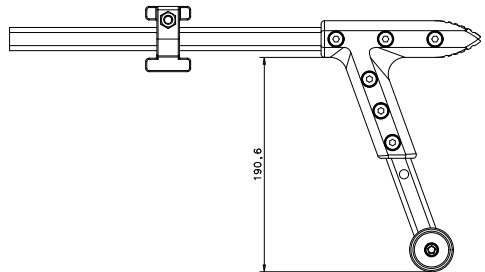
The libertas gas cylinder allows the chair back to flex backwards ca 15 ° starting from the recline angle the chair back has been positioned to.

CONTENT OF LIBERTAS KIT FOR NETTI III:

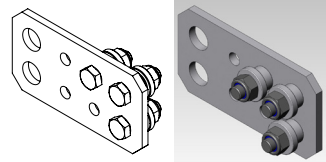
- 1x gas cylinder with 15° free move - item numer depending on your order:
(82330 = 80Nm)
(82331 = 120Nm)
(82332 = 160Nm)



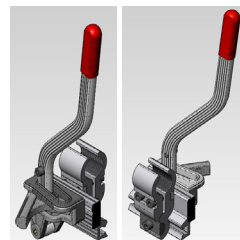
- 2x Antitippers extra long (25423) + 490mm springs (26056)



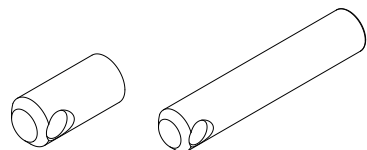
- 1x frame extender kit (20824) right and left brackets



- 1x brake right for lower chair frame (41898)
1x brake left for lower chair frame (41899)



- 1x gas cylinder locking head 3,8cm (20383) for seat depth 40cm, 42,5cm and 45cm
1x gas cylinder locking head 9,6cm (21888) for seat depth 45cm, 47,5cm and 50cm.

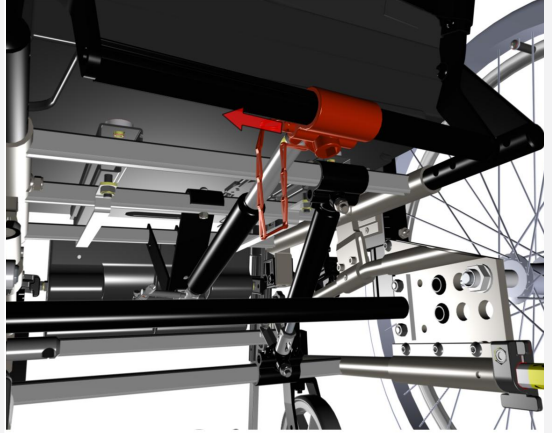


HOW TO MOUNT LIBERTAS FUNCTION TO NETTI III WHEELCHAIRS

- Recline the back backwards at least 15°.



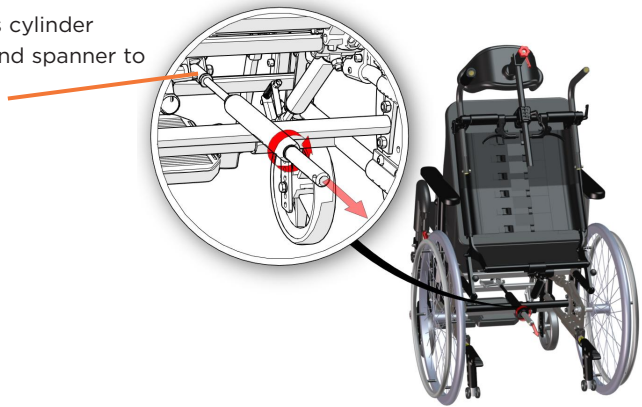
- Disconnect the cylinder hinge from the gas cylinder of the recline cylinder by pulling the quick release outwards.



- Fold the back frontwards.



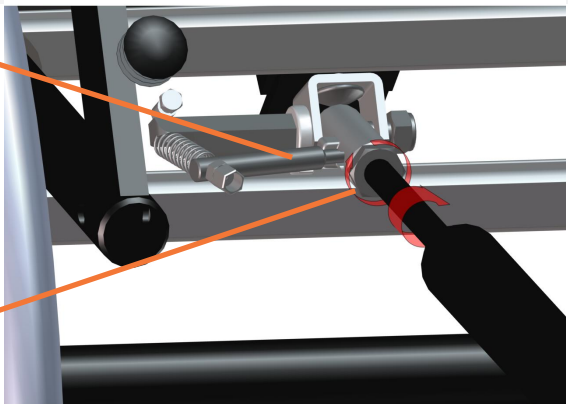
- Remove the old gas cylinder
- Use a 17mm open end spanner to open the nut.



- Connect the 38mm or 96mm gas cylinder locking head to the Libertas gas cylinder - tighten firmly by hand.
- Turn the nut closer to the gas spring body.

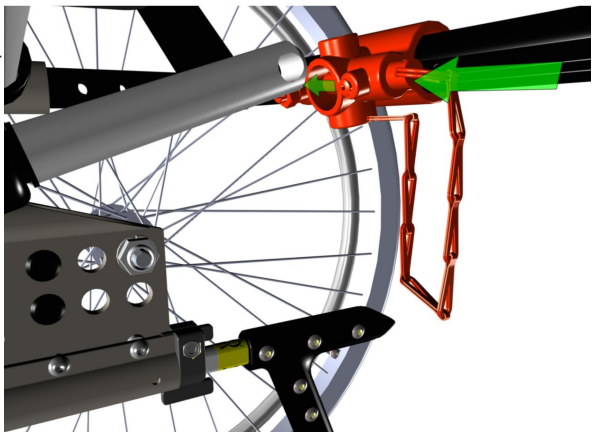


- Screw the gas cylinder into the head until it touches the rod across, no play. (Too loose: you cannot release the operating handle. Too tight: it will not lock.)



- Tighten the nut close to the head with the 17mm open end spanner to fix the gas cylinder firmly.

- Connect the gas cylinder locking head to the plastic bracket - reconnect the quick release bolt.



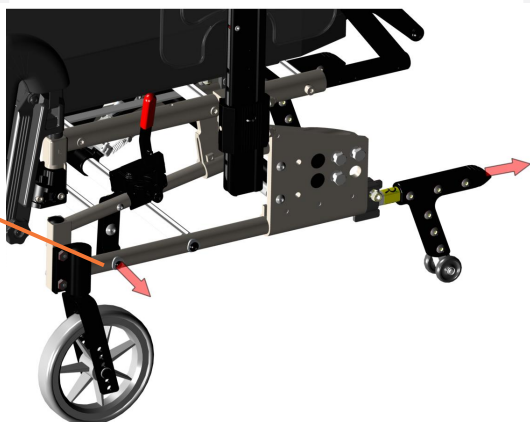
- Remove the wheels.

If you have 20", 22" or 24" wheels, dismount the rear wheels from the chair by using the QR-Axles.

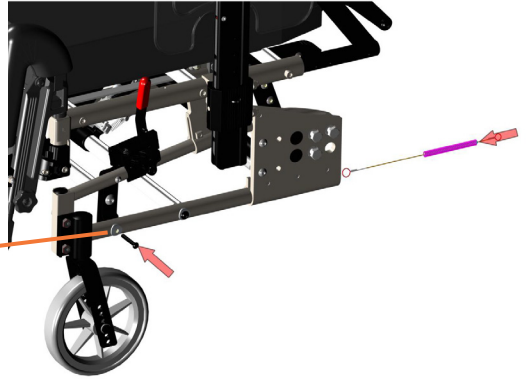
Dismount the wheel sleeve or drum brake plate from the rear part of the frame.



- Replace the existing anti-tippers.
- Remove the front screw holding the spring inside the tube and pull out the antitip.



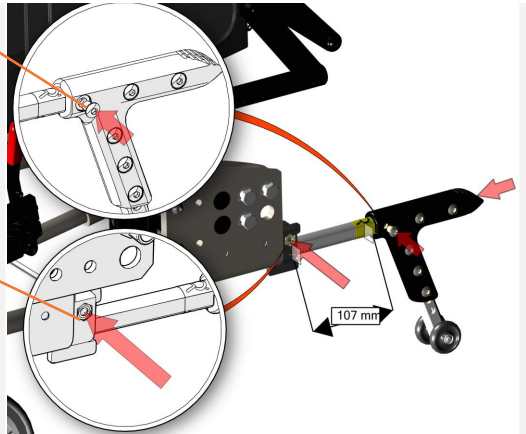
- Insert the long spring 26056 and fix it in the front.



- Insert the long antitip 25423 and fix it to the spring. Make sure the outer distance bracket is loose.

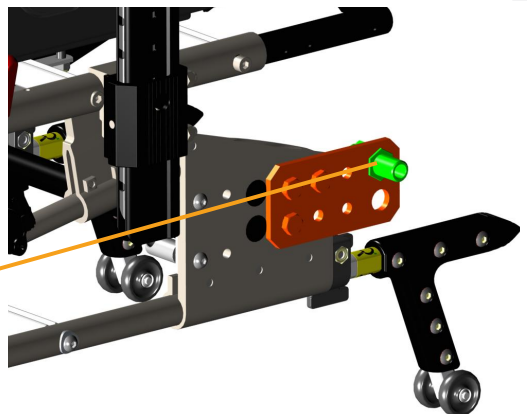
- Push the outer distance bracket ca 100mm from the front edge of the antitip by pulling the antitip that is now held by the spring inside. Fix the bracket and reassure that the spring force is appropriate to pull the antitip back.

- Swing the anti-tippers downwards and test the function

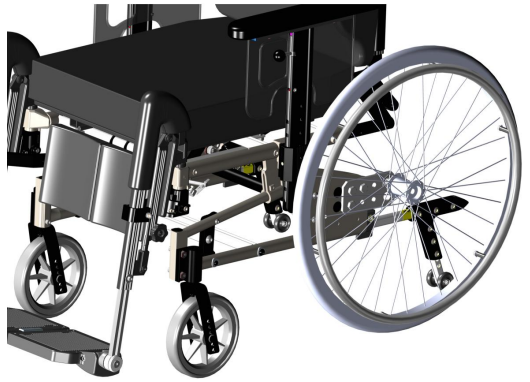


- Add the frame extender plates to the rear chair frame according to the wheels and mount the plate outside the chair by plugging the bolts with the washer from outside to inside and fix the bolts of the frame extender plates with the delivered nuts tightly

- Assemble the wheel sleeve or drum brake plate to the frame extender plates as originally mounted.



- Mount the wheel on its new position



- Mount the brakes

For 20", 22" and 24" wheels, dismount the original brakes from the upper chair frame and mount the brakes (article number 41898 and 81899) for the lower chair frame to the lower frame tubes and proof the breaking force





IN DIALOGUE WE CREATE
SIMPLE SOLUTIONS AND
ENABLE JOY OF LIFE



This product conforms to
93/42/EEC for medical products.

2015-04
MD 0072 UK

FEEL FREE TO CONTACT US:



Alu Rehab AS
Bedriftsvegen 23
4353 Klepp Stasjon
NORWAY

T: +47 51 78 62 20
post@My-Netti.com

My-Netti.com