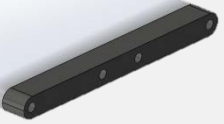



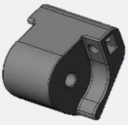
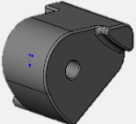
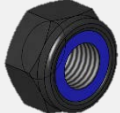
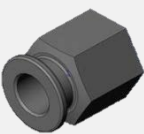


MOUNTING DESCRIPTION

Seat width-extension kit 50 mm



Please check if you have received all of the following parts before starting with the alterations:

	2 X spacer for side panel surface
	8 X M5 x 49 screws
	2 X M8 x 65 screws
	2 X nylon washer
	1 X armrest - stopper left
	1 X armrest -stopper right
	2 X nut M8
	2 X nut M8with ringnut

Next couple pages will give you the detailed instructions of the alterations.

MOUNTING DESCRIPTION

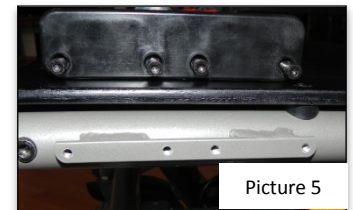
Seat width-extension kit 50 mm

The following instructions are for the left side. The steps for the right side are identical.

1. Untighten the nut on the backrest holder with a M13 wrench and unscrew it with an Allen key size 6. Now press the red armrest locking mechanism and slowly lift the armrest upwards. The armrest – stopper can be removed now. (Picture 1 – 3).



2. In the next step please remove the 4 screws of the side panel surface with an Allen key size 4 and put the side panel surface aside. (Picture 4 + 5).



3. Now take a spacer and 4 of the M5 x 49 screws. Plug the 4 screws into the side panel surface and spacer. Tighten the screws with an Allen key size 4 into the thread of the frame tube. (Picture 6 + 7).



4. Untighten the M8 nut with ringnut on the backrest holder with a 19 mm wrench and replace it with the new and wider M8 nut with ringnut. Please note that the M8 nut with ringnut must be glued with Loctite again. (Picture 8 + 9).



MOUNTING DESCRIPTION

Seat width-extension kit 50 mm

5. In the next step please mount the wide armrest – stopper with the long M8 x 65 screw. Please note to put the washer on the screw before you plug the screw into stopper and backrest holder. Now screw on the M 8 nut and tighten it firmly. (Picture 10) Swing the armrest back forward and check if it locks correctly and is tight.

